



andrew nunn  
ASSOCIATES

PER MONTH

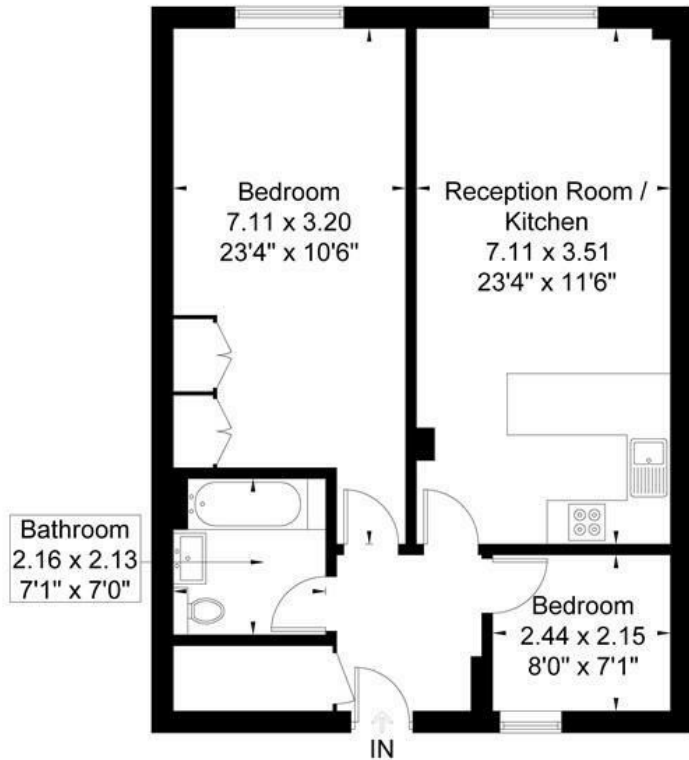
**£2,700 Per Month**  
**9 Devonhurst Place**

Chiswick, W4 4JB



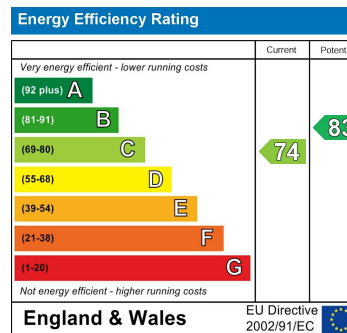
# Devonhurst Place

Approximate Gross Internal Area = 64.4 sq m / 693 sq ft



**Fourth Floor**

Although every attempt has been made to ensure accuracy, all measurements are approximate. The floorplan is for illustrative purposes only and not to scale.  
© www.perspective.co.uk



Agents Note: Whilst every care has been taken to prepare these particulars, they are for guidance purposes only. All measurements are approximate and are for general guidance purposes only and whilst every care has been taken to ensure their accuracy, they should not be relied upon and potential buyers/tenants are advised to recheck the measurements